



STATE FINALS INFORMATION

To: Golf Coach, SIJHSAA Golf State Qualifiers
From: Reggie Norman
Date: May 7th, 2024
Re: State Finals qualifiers packet

Congratulations on qualifying for the SIJHSAA Golf State Finals. I hope that the tournament will be an enjoyable experience for you, your player(s), and your school.

Some of the following information is aimed at your fans (Golf Cart Policy & Spectator Code of Conduct), and we would ask that you share those with them as needed prior to the tournament.

- SIJHSAA State Final Information
- Lunch PreOrders
- Course Layout
- Copy of the New Boys & Girls Scorecard
- Rules
- Spectator Code of Conduct
- Tournament Schedule & Policies
- T-Shirt Sales and deadline
- Scoring Procedure
- State Final Reminders
- Coaching Rules
- Spectator Rules handout



Congratulations on qualifying for this year's state finals!



SIJHSAA State Final Information

<u>Contacts</u>	<u>Position</u>	<u>Phone</u>
Reggie Norman	Tournament Director	618-923-2453
JC Davis	Host Athletic Director	618-318-5456
Greg Hale	SIJHSAA Executive Director	618-357-2985
Jason Stilley	Rend Lake Golf Course	618-629-2353

Coaches Meeting

There will be no coaches meeting prior to the tournament. All coaching questions after reading this document should be directed to Reggie Norman at 618-923-2453.

Practice Round

Practice rounds should be scheduled through the Rend Lake Golf Course pro shop (618-629-2353). While scheduling, identify yourself as a state qualifier to receive the **\$25** green fee. Tee times will be based on course availability.

Driving Range & Player Tournament Fee

Tournament fee will be paid to Rend Lake Pro Shop. **\$40 per player**

The driving range balls will be distributed through the pro shop. Range ball fee is **\$5**.

Cart Fees

Carts at Rend Lake are **\$30** and available on a first come first served basis. I only have access to 35 carts for Observers & Rules Officials. Carts will **NOT be reserved for coaches.** Personal Cart trail fee of \$20.

Food

Seasons Restaurant will be serving food and drink at the state tournament. Pre-Orders for coaches will be available. Please remind parents that alcohol sales are prohibited at this event.

Scorecard

Included is a scorecard that will be used for the state final. Please use this scorecard for two purposes;

1. yardages for each hole for practice round
2. Have your player familiar with the scorecard and how to fill it out.

Tee Times

Final Tee times will be emailed and posted on the SIJHSAA website no later than May 3rd - Arrive/Range/Putting/1st tee/ Tee Time will be emailed to coaches as well.

Registration

Players/coaches must register at least 1 hour prior to their tee time and be at the tee 10 minutes before their tee time. Arriving after a scheduled tee time will result in a disqualification. Registration table will be set up outside the pro shop the day of the tournament.

Measuring Devices

Range Finders (with slope disabled) and stand-alone GPS devices (Front, Middle Back distances) are permitted. Cell phones for yardages are not permitted. Players found using cell phones will be considered to have violated USGA Rule 10.2a (Advice).

Weather Related Items

When play is suspended by the Games Committee for a dangerous situation, if the players in a group are between the play of two holes, they shall not resume play until the Games Committee has ordered a resumption of play. If they are in the process of playing a hole, they shall discontinue play IMMEDIATELY and not resume play until the Games Committee has ordered a resumption of play. If a player fails to discontinue play immediately, he/she is disqualified unless circumstances warrant waiving the penalty as provided in Rule 33-7. Note: A suspension shall be signaled by one prolonged horn blast.

If play is suspended and cannot be resumed :

If nine holes have been completed by the entire field – scores posted will determine the state championship.

If nine holes cannot be completed by the field - A second date will be used with scores cancelled from the first date / If play cannot be completed due to darkness or weather, on the second date the state champion will be determined by the number of holes completed by the entire field.

Tie-Breaker Rules

Ties for 1st place only will be decided by an on-course playoff. Top 15 will be awarded medals. Ties in places 2-15 will be decided with a scorecard playoff starting with hole number 1.

Lunch Pre Orders

Preorder Form for Seasons Restaurant - Sack Lunch for May 7th.

Preordered lunches will be labeled by school and ready for pick up at the Pavilion by 11:00. Lunches are \$12 per lunch and paid in full to Seasons Restaurant . Payment made to Seasons Restaurant not the pro shop (Cash, Check, debit card, or credit card only.) Checks payable to **Seasons Restaurant**

Alcohol Sales are Prohibited at this Event.

E-mail form to rnorman@benton47.org by **May 3rd**

School _____

Number of Lunches



Boys
start on
Holes #
1-9

Girls
Hole #
10-18
twice

Boys
finish
On
Holes #
19-27

Boys will play course holes 1-9 & finish with 19-27

Girls will play course holes 10-18 & 10-18 again

2019-2020 Rules of Golf

(A quick reference guide)

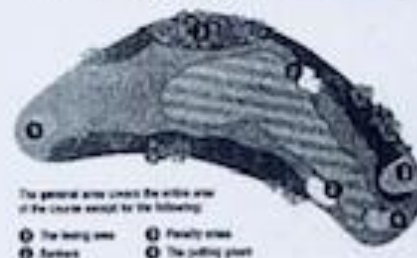
This guide features the most common situations a player will face on the golf course. It includes a simplified explanation for interpreting rules that can be confusing or difficult when a player is on the golf course. Keep a copy of this quick reference in golf bag.

Areas of the Course

There are five areas of the course. Important to know where you are to get the correct ruling:

1. The teeing area (this is specific to the two-club length rectangular area from the tee markers in which you are playing from to start the hole)
2. Bunkers
3. Penalty Areas
4. Putting Green
5. The general area (covers the entire area of the course except the areas listed above)

DIAGRAM 1.1: DEFINED AREAS OF THE COURSE



Penalty Areas (Yellow or Red)

If a player's ball is in a penalty area, including when it is known or virtually certain to be in a penalty area even though not found, the player has these options:

- > **Play the ball as it lies.** The player may choose to play the ball as it lies. The player may ground his/her club, take practice swings, and remove loose impediments in the penalty area – **NO PENALTY**
- (1) **Stroke-and-Distance Relief.** The player may play the original ball or another ball from where the previous stroke was made – **STROKE AND DISTANCE**
- (2) **Back-On-the-Line Relief.** The player may drop the original ball or another ball in a relief area that is based on a reference line going straight back from the hole through the estimated point where the original ball last crossed the edge of the penalty area - **ADD 1 STROKE PENALTY**
- (3) **Lateral Relief (Only for Red Penalty Area).** When the ball last crossed the edge of a red penalty area, the player may drop the original ball or another ball in this lateral relief area - **ADD 1 STROKE PENALTY**

DIAGRAM #1 17.1b: RELIEF FOR BALL IN YELLOW PENALTY AREA

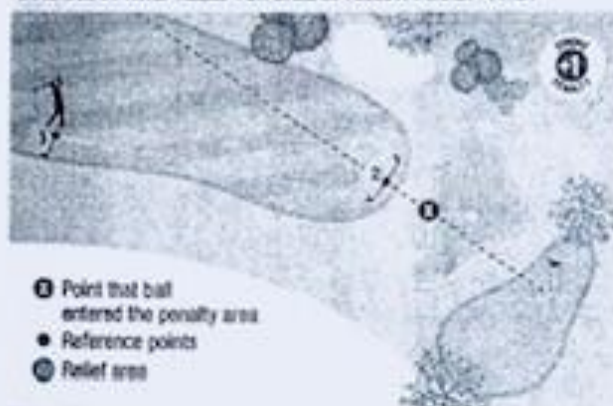
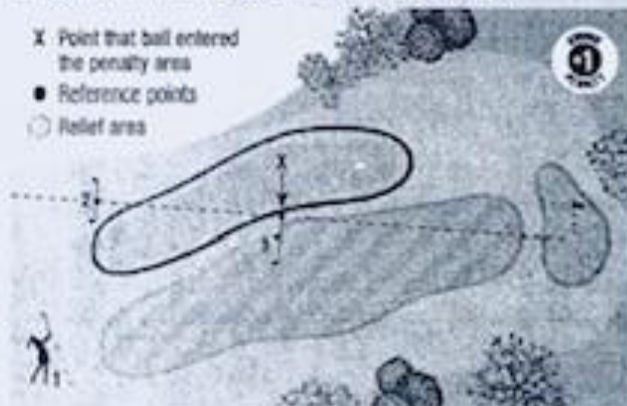


DIAGRAM #2 17.1b: RELIEF FOR BALL IN RED PENALTY AREA



Lost Ball / Out of Bounds / Provisional Ball

Lost Ball (Stroke and distance penalty)

- > A player has **3 minutes** to search for a Lost Ball. If not found within 3 minutes
- > Return and play another ball from the spot where the previous stroke was played... **STROKE AND DISTANCE.**

Provisional Ball (Stroke and distance penalty)

- > May only be played if the player believes the original ball is lost or out of bounds.
- > The player must announce a provisional is being played.
- > If the original ball is found or is determined it is in a penalty area, the player **MUST** abandon the provisional ball and proceed under penalty area options.

Unplayable Ball

A player is the only person who may decide to treat his or her ball as unplayable by taking relief. Unplayable ball relief is allowed anywhere on the course, except in a penalty area. A player may take unplayable ball relief using options 1, 2 or 3. There is one additional option when taking unplayable ball relief in a bunker.

- (1) **Stroke-and-Distance Relief.** The player may play the original ball or another ball from where the previous stroke was made – **STROKE AND DISTANCE**
- (2) **Back-On-the-Line Relief.** The player may drop the original ball or another ball in a relief area that is based on a reference line going straight back from the hole through the spot of the original ball - **ADD 1 STROKE PENALTY**
- (3) **Lateral Relief.** A player may drop a ball in a designated two club relief area from the spot of the original ball - **ADD 1 STROKE PENALTY**
- (4) **Bunker Only –** The Player may take back-on-the-line relief outside the bunker based on the reference line going straight back from the hole through the spot of the original ball - **ADD 2 STROKE PENALTY**

DIAGRAM 14.1 RELIEF OPTIONS FOR BALL UNPLAYABLE IN GENERAL AREA

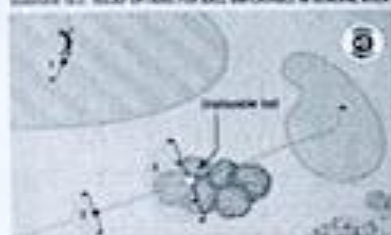


DIAGRAM 14.2 RELIEF OPTIONS FOR BALL UNPLAYABLE IN BUNKER



OTHER SITUATIONS

Dropping the ball

- > When dropping the ball, a player must drop the ball at knee height.
- > If dropped incorrectly and before playing the next stroke, a player may re-drop (to drop in the right way) with no penalty.

Free Relief Situations A golfer is allowed a free drop, within the designated relief area:

- > The ball comes to rest on or in an abnormal course condition or the player is standing on or in an abnormal course condition or the abnormal course condition interferes with the player's area of intended swing. (Examples include: cart paths, any immovable obstruction, temporary water, or GUR)
- > A staked tree interferes with the lie of the ball, player's stance, or area of intended swing.
- > The ball becomes embedded in its own pitch-mark anywhere within the general area. A ball must be dropped in a designated relief area right behind where the ball is embedded. (The General Area includes fairways and rough)
- > The ball comes to rest on the wrong putting green.
- > A golfer is in any kind of life-threatening situation (i.e. snakes, alligators, wild dogs...)

No Relief Situations The golfer must play the ball as it lies ... or take a penalty stroke for an unplayable lie when:

- > The ball lies next to a fence, wall or stake that defines the out-of-bounds area.
- > The ball lies next to trees or bushes that inhibit golfer's swing.

Other Situations

- > A golfer knocks ball off tee at address... **NO PENALTY** (ball not in play).
- > A golfer is allowed to remove a **RED** or **YELLOW** stake that impairs the swing or stance, provided the golfer does not move the ball.
- > If the ball lands on an opposite tee box, a player **MUST** play the ball as it lies... **NO PENALTY**.
- > When the ball is overhanging the hole, a player is allowed reasonable time to reach the hole and then up to 10 seconds to determine if the ball is at rest before marking the ball or tapping in.
- > If a ball lands on a divot or in a divot hole, the player must play the ball as it lies.
- > If a player hits the ball of another golfer (the wrong ball), that player must correct his mistake by going back and playing his ball from the correct location, adding a **2 STROKE PENALTY**.

Player's Responsibilities for an IHSA State Series Tournament

1. Know the USGA Rules of Golf and proper etiquette. Keep a current USGA Rule Book in your golf bag. Players should also be familiar with the local rules of the regional, sectional or state final course.
2. Players should check in with the starter approximately 15 minutes early and appear promptly when announced, ready to play.
3. Players should check their scorecard for hole by hole accuracy before attesting and signing. In accordance with USGA Rule 3.3b, a player is only responsible for his/her hole by hole score.
4. Players are responsible to make sure that a fully completed, attested scorecard is given to the scorekeeper as soon as possible.
5. Players should play as quickly as possible and without undue delay between shots, green and tees.
6. Players should keep up with the group ahead of them.
7. Players should play only if they are prepared to play the game and series to its full conclusions.
8. Players should know and abide by the IHSA Player Code of Conduct.

SPECTATOR CODE OF CONDUCT – GOLF

Spectator Policy

1. Spectators shall remain on cart paths or in the rough approximately 15 yards from the players at all times. Spectators are also not permitted in practice areas on the day of competition.
2. There can be no communication between players and spectators that could be deemed **advice*** of any nature for the duration of the event.
3. All school personal and fans with the exception of the school designated coach(es) are considered spectators. All coaches must wear their coaches tag in a visible area.
4. Uninvited interference with the rules committee before, during or after making a ruling is prohibited.

Penalties

- A. First offense – warning to the spectator
- B. Second offense – Spectator will be removed from the course for the remainder of the day
- C. A single flagrant gross act of misconduct or serious breach of etiquette before, during or after the tournament – Spectator will be removed from the course for the remainder of the competition.

***advise** - USGA: Advice is any verbal comment or action that is intended to influence a player in choosing a club, making a stroke, or deciding how to play a hole.

We encourage all coaches to have spectators to follow **ahead** of their player and not follow behind.

TOURNAMENT SCHEDULE

- A. The girls will play the Middle (10-18) twice . The boys will compete on the Front (1-9) and then finish on the Back (19-27)

Rend Lake Golf Complex
12476 Golf Course Road
Whittington, IL 62897
1-800-999-0977
www.rendlakegolfresort.com



Scorecards will be provided for golfers at the first tee.

- B. All participants are responsible for making sure they register at the appropriate time according to the given time sheet. Registration time will be one hour and fifteen minutes before tee time.
- C. There is no admission charge for spectators at the state golf tournament. Coaching & Spectator carts will be available for \$25 on a first come first serve basis. (Observers and Rules Officials are the ONLY ones guaranteed a cart)
- D. At Registration coaches should pick up pre-ordered shirts, coaching tags, and have players sign a flag. Only coaches listed on the roster entry form will receive a coaching tag.

AWARDS

- A. Individual medals will be presented to the top 15 finishers in both the boys and girls divisions. Additional awards given to the boy and girl medalist.

TOURNAMENT POLICIES

- A. No outside coolers, food, or beverages of any kind will be allowed into the facility.
- B. Coaches will be allowed to coach anywhere on the course except on the putting green. They must wait until the last player on the green putts out before communicating with their player.
- C. Appropriate golf attire should be worn by player and coach.
- D. Range Finders (distance measuring only) are allowed.
- E. Caddies: Per USGA Rules, a player is prohibited from using a caddie during the state series.



State Tournament Apparel

T-Shirts and apparel will go on sale at each respective class online stores. The online store information will be listed on the home page of the association website. (www.sijhsaa.com)

Apparel will be made and ready for pick up on May 7th at registration.

DEADLINE to order will be May 3rd at 5 pm !





SCORING PROCEDURE

Scoring Procedure After Round Completion

1. Each player will record everyone's score, including their own, after completion of each hole. Players are responsible for hole by hole scoring and NOT adding up scores.
2. Each group will report straight to the scoring area after completing their round.
3. The SIJHSAA representative will read an opening statement prior to recording of scores.
4. The representative will then announce the first competitor's name (alphabetical order by players' last names.)
5. The competitor who kept that card then goes through the players' score card hole-by-hole to verify that each hole has been correctly recorded.
6. If, after going through each hole, the card is correct, the competitor and his/her scorer shall sign the card and return it to the scorecard box. No alterations may be made on a scorecard after the competitor has put it in the box.
7. If there is a dispute, the committee shall resolve it before allowing the card to be signed.
8. The process shall be repeated for the remaining players in the group (alphabetical order by the players' last names).
9. After the card is signed and put in the box, scoring personnel shall add the hole-by-hole scores to determine a player's total.

NOTES

A player's card shall be considered FINAL once he/she puts it in the box.



GOLF STATE FINALS

The Rules of Golf as approved by the USGA shall apply as recommended by the USGA for certain play and abnormal conditions, as well as local rules published in the SIJHSAA Golf Terms and Conditions. The on-site committee decision in regards to the rules of golf is final and not available for appeal.

FORMAT: 18-hole Individual Stroke Play Event.

TEES: Boys: Gold Tees Girls: Red Tees

DECIDING TIES: Ties for 1st place only will be decided by an on-course playoff.

SLOW PLAY: Each competitor shall play without delay. A group losing more than their starting interval will be subject to monitoring which may result in a penalty.

EMBEDDED BALL: Rule 25-2 is in effect “through the green;” everywhere except hazards, the putting green and teeing ground of the hole being played. The ball may be lifted, cleaned, and dropped, without penalty, as near as possible to the spot where it lay but not near to the hole.

PRACTICE: A player must not play any practice stroke on or near the putting green of the last hole played. If a practice stroke is played on or near the putting green of the hole last played, the player shall incur a penalty of two strokes.

SUSPENSION OF PLAY: When play is suspended by the Games Committee for a dangerous situation, if the players in a match or group are between the play of two holes, they shall not resume play until the Games Committee has ordered a resumption of play. If they are in the process of playing a hole, they shall discontinue play IMMEDIATELY and not resume play until the Games Committee has ordered a resumption of play. If a player fails to discontinue play immediately, he/she is disqualified unless circumstances warrant waiving the penalty as provided in Rule 33-7. Note: A suspension shall be signaled by one prolonged horn blast.

USE OF ALL ELECTRONIC DEVICES: Range finders (distance measuring only) are allowed. Portable communication devices (cell phones, radios etc.) may be used to call a rules official or for the local course app. These devices cannot be used as a personal music or for coaching. Any participant found using the device during their stipulated round will be disqualified.

SCORING: Scores must be verified and recorded at each hole. Questions on procedure or dispute of the Rules of Golf must be referred to the Onsite Committee. Upon completion of the round, proceed immediately to the designated scoring area. The scorecard must be double checked for accuracy and then signed by each the competitor and the scorer. After signatures are on the scorecard, it shall be placed in the SIJHSAA Official Scoring Box. After the scorecard is placed in the box, no further corrections can be made; if a scorecard is missing a signature or if the competitor signed for a lower score, then the competitor will be disqualified.

FLOWER BEDS & WOOD CHIPS: A mandatory drop is required from all flower beds and wood chips surrounding newly planted trees. Proceed under Rule 24-2. Mulch and wood chips not in flower beds are considered loose impediments.

OUT OF BOUNDS (OB): Played as a lateral penalty area

2024

SIJHSAA

State Rule Sheet

Tournament Rules Sheet

Rules: The 2020 USGA Rules will govern play

Lies: ball will be played up everywhere / scored length - **can be more if on Hard Pan**

Penalty areas: defined by red stakes and/or lines (or grass line)

defined by yellow stakes and/ or lines

***Drop Zones will be located on the green side of a forced water carry**

Boys holes –8,15,16,17 Girl Holes – 3 & 9

Out of Bounds: defined by white stakes and/or lines will be played as a lateral penalty area

Ground Under Repair: defined by white line

Bunkers : Rake and Place

Max Score: Double Par will be the maximum score for each hole. If Double par is reached, player will pick up and be ready for the next hole.

Tees:	Boys	Gold Tees
	Girls	Red Tees

Pace of Play: Players and groups should monitor their play by the pace of the group in front of them

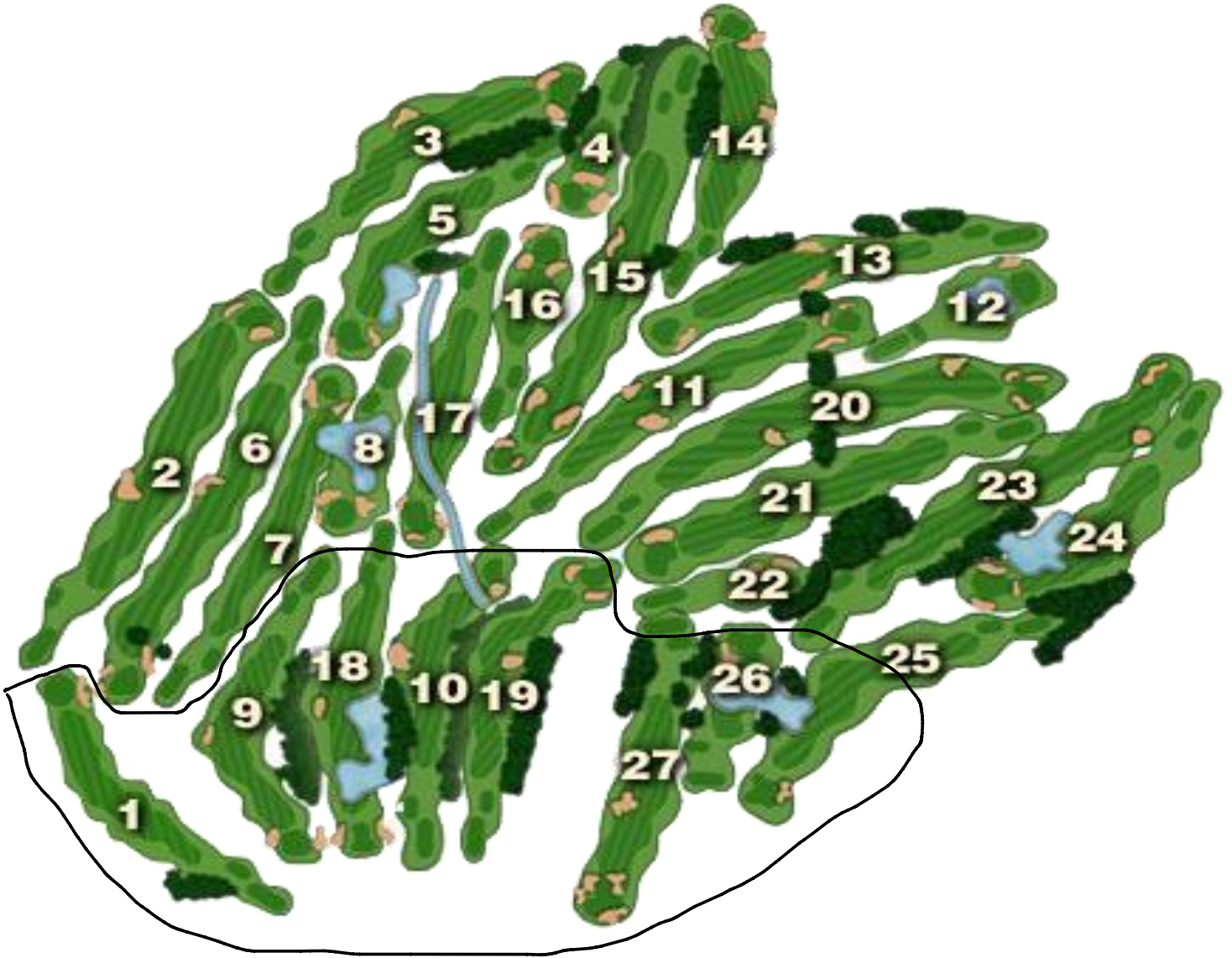
Scorecards: Read attached Scoring Procedure

Measuring Devices: Range Finders (with slope disabled) and stand-alone GPS devices (Front, Middle Back distances) are permitted. Cell phones for yardages are not permitted. Players found using cell phones will be considered to have violated USGA Rule 10.2a (Advice).

Decisions: All rule decisions will be made by the Rules Committee
Reggie Norman, Gary Adkins, and Larry Grace

Phone Numbers :	Reggie Norman	923-2453
	Gary Adkins	638-4338
	Larry Grace	638-5522

Rules Officials Map



RULES OFFICIAL NUMBER

Boys Hole 1, 9, 10, 16, 17, 18 Girls Hole 1, 9

Call Reggie Norman 618-923-2453

Boys Hole 2-8, 11-15 Girls Hole 2-8

Call Gary Adkins 618-638-4338

or

Boys Hole 2-8, 11-15 Girls Hole 2-8

Call Larry Grace 618-638-5522



SPECTATOR POLICY

Spectators shall remain on cart paths or in the rough approximately **15 yards from the players at all times.** Spectators are also not permitted in practice areas on the day of competition.

There can be no communication between players and spectators that could be deemed **advice*** of any nature for the duration of the event.

All school personnel and fans with the exception of the school designated coach(es) are considered spectators. All coaches must wear their coaches tag in a visible area.

uninvited interference with the rules committee before, during or after making a ruling is prohibited.

Penalties

First offense – warning to the spectator

Second offense – Spectator will be removed from the course for the remainder of the day

A single flagrant gross act of misconduct or serious breach of etiquette before, during or after the tournament – Spectator will be removed from the course for the remainder of the competition.



COACHING POLICY

Coaches **MUST** wear the **COACHING TAG** given out at Registration.

A coach may talk to a player anytime – **EXCEPT** the green. Coaches cannot talk to a player about the next shot once they are on the green.

First offense – warning to the coach & player

Second offense – One stroke penalty to the player